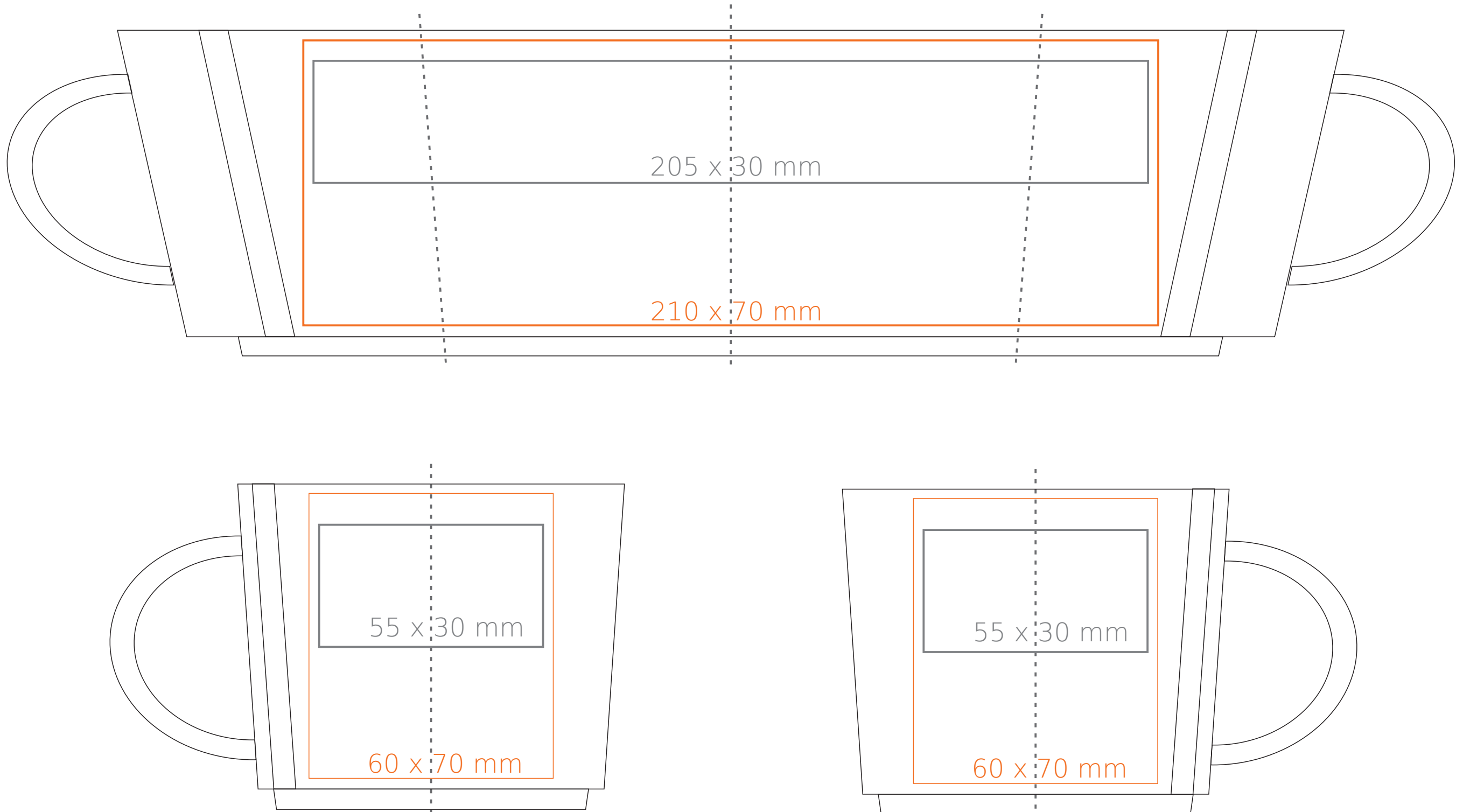


# M/453 Lucas

350 ml / h: 80 mm / Ø 95 mm



Imprint on the handle

- 50 x 10 mm

Imprint on the inside

- 40 x 20 mm

Imprint on the bottom inside

- Ø 30 mm

Imprint on the bottom outside

- Ø 45 mm

\*In the case of projects for transfer print running outside of the standard print area, please contact our sales department.

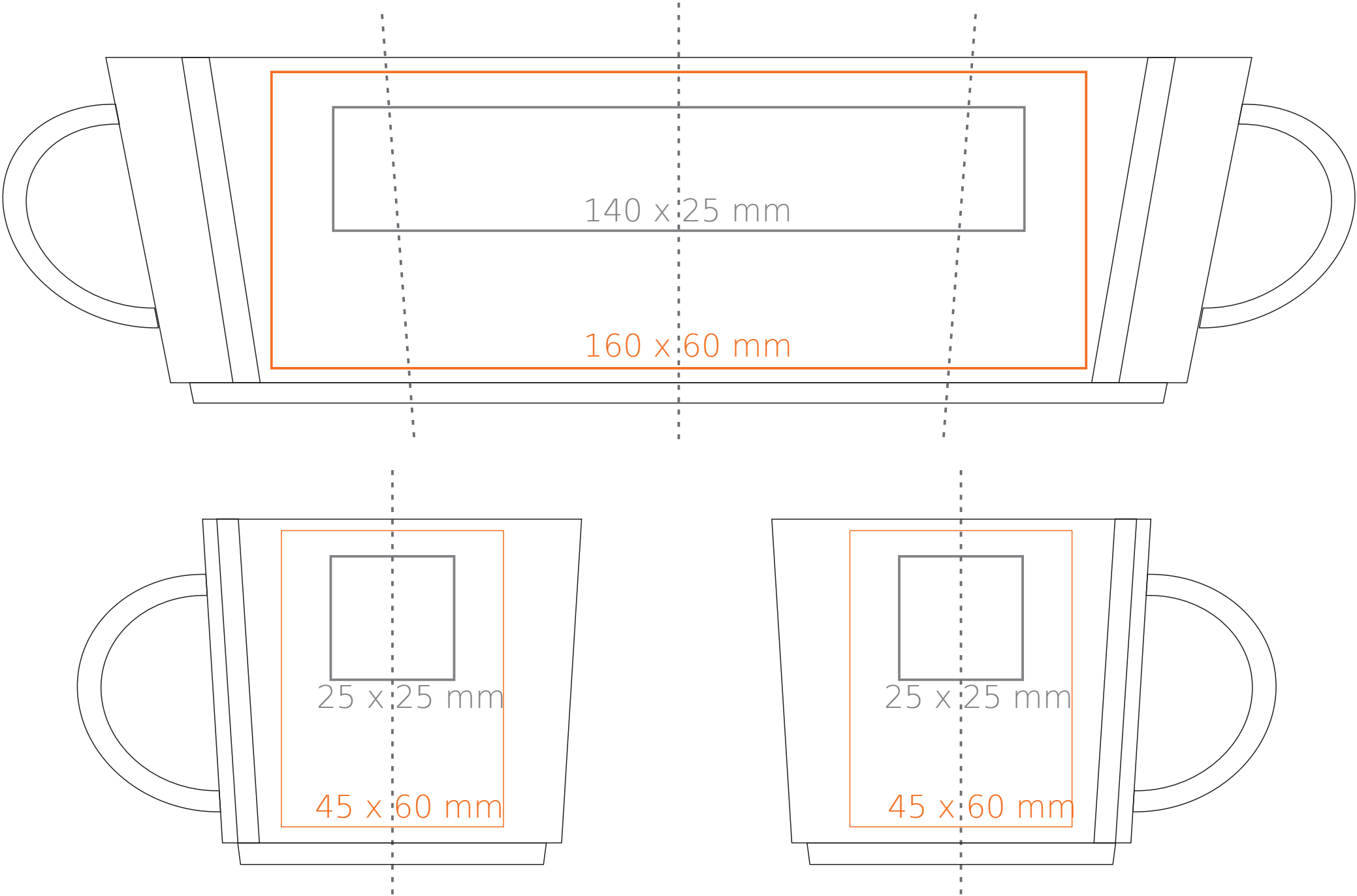
[How to prepare print material](#)

meaning

— Transfer Print  
— Sensitive Touch  
— Direct Print

M/453 **Lucas**

200 ml / h: 70 mm / Ø 77 mm



- Imprint on the handle
- Imprint on the inside
- Imprint on the bottom inside
- Imprint on the bottom outside
- 50 x 10 mm

- 40 x 20 mm

- Ø 30 mm

- Ø 35 mm

\*In the case of projects for transfer print running outside of the standard print area, please contact our sales department.

[How to prepare print material](#)

meaning

- Transfer Print
- Sensitive Touch
- Direct Print